

# Randy & Friends



Updates and News

## BELOVED SUPPORTERS,

As we welcome a brand new year, we want to take a moment to celebrate another incredible year for Randy and Friends! Our associates, volunteers, board members, and notable benefactors contributed to the milestones and moments that made 2023 a year we will never forget.

Our local community enthusiastically welcomed our newest enterprise, **Midland Ice Cream Social**, and kept the ice cream cart booked solid for most of the year. We attended over a dozen festivals and celebrations as a vendor throughout the year and booked over 50 private events, including a couple of weddings! The addition of the Midland Ice Cream Social enterprise has allowed us to employ **12** adults with disabilities to scoop, sell and hand out ice cream.



Employees of the ice cream cart were out in the community, building relationships and educating on inclusion while treating their new friends to some of the yummiest ice cream around. Looking forward into 2024, our goals for Midland Ice Cream Social include expanding our opportunities for serving the public and expanding our training opportunities for our employees.



INCLUSION IS

# SWEET

[Randyandfriends.org](http://Randyandfriends.org)

## MIDLAND KRU

New name, same awesome day program!! In addition to our daily schedule, 2023 held many exciting community immersion events, including summer days at Lake Lanier Islands, trips to the Georgia Aquarium and Zoo Atlanta, and picnics in Helen. We hosted 12 associates on average each week.

### Midland Kru Daily Schedule

9:00-9:30 - Kru Arrives  
9:30-10:00 - Kru Hang Out Time  
10:00-10:45 - Bible Study  
10:45-11:15 - Exercise  
11:15 - 12:00 - Life Skills  
12-12:30 - Lunch  
12:30-1:00 - Free Time  
1:00-2:30 - Educational Centers  
2:30-3:00 - Chores  
3:00-4:00 - Pick Up

During Educational Center Time, there will be days that Kru Associates may do woodworking or help with Busy Bees Enterprise.



KRU IS A HELPFUL PLACE  
FOR ME, A PLACE OF  
ENCOURAGEMENT &  
WONDERFUL FRIENDSHIPS!  
-FINLEY



## LOOKING FORWARD

If 2023 was the year we planted fresh seeds, may 2024 be the year they begin to BLOOM. At Randy and Friends, we desire to expand our reach to better support more adults with disabilities in North Georgia. We long to see our community continue to embrace inclusion as we offer each associate independence, employment, dignity and joy through our programming.

None of this would be possible without the fervent prayers, kind hearts and generous gifts of those who support this critical work. As we prepare for so much hard work to blossom this year, we want to offer our deepest gratitude and ask that you buckle up! Things are about to get even better around here, and you won't want to miss a minute!!!!



Randyandfriends.org

## NEW AUTOMATED GIVING PLATFORM

We are so excited to announce that we have partnered with Harness Giving to offer a user-friendly and customizable way to support our work at Randy and Friends- right on our website. This platform offers monthly recurring donations, one-time gifts and a "Round Up" option, making it more accessible and personalized for each type of donor who may want to contribute to our mission.

Our new giving options will allow us to build our database of donors and stay in more regular communication w throughout the year. The Round Up option allows benefactors who prefer to make smaller, more regular donations to "round up" the spare change from their purchases on a debit or credit card. These donors can directly designate their extra nickels and dimes from their grocery, gas and shopping purchases to Randy and Friends.

To learn more and sign up for your preferred giving type, simply go to our website- RandyandFriends.org and click the floating **DONATE** button.

Our goal is to have most of our funding move through this platform in 2024, helping us streamline our processes and stay in closer contact with our generous donors.

## All Because of Love

Randy & Friends, Inc is a 501(c)3 Christian ministry located in Gainesville, GA that equips individuals who have special needs with new skills and friendships.

The goal of our organization is to help these youth and adults **achieve independence and self worth with life skills and employment** to sustain them the rest of their lives.

Donate



Login

## Give Monthly

Already have an account? Login

One-Time

Monthly

Round-Ups

\$10

\$25

\$50

\$100

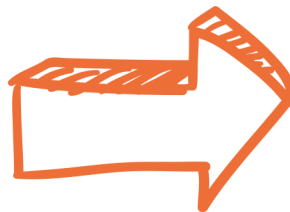
Custom

Choose a Campaign:

Area of Greatest Need



Donate \$50



Use your phone's camera to scan this  
and access our funding site  
immediately!